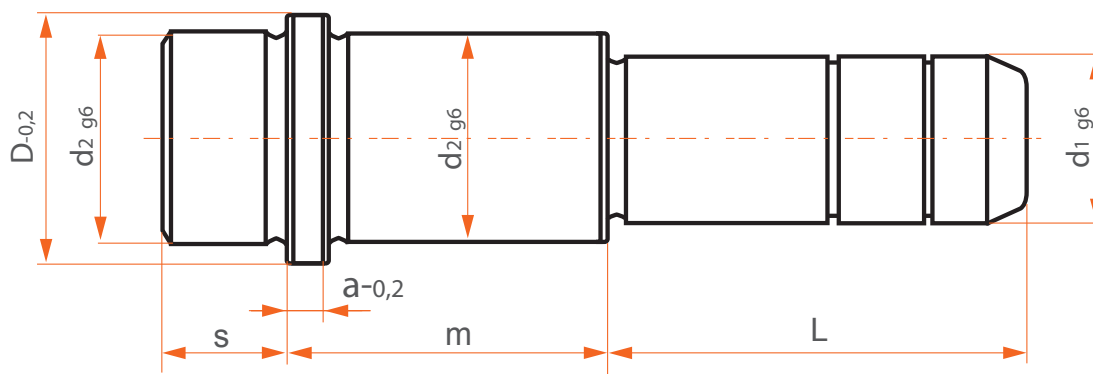


Material	Acero 1.7264
Material	Steel 1.7264
Tratamiento	Cementado (profun. 0,8 mm)
Treatment	Case hardened (depth 0,8 mm)
Dureza	60 - 62 Hrc
Hardness	60 - 62 Hrc
Forma de pedido	Guía GC2 / d1 x m x L
Order form	Guide Pillar GC2 / d1 x m x L

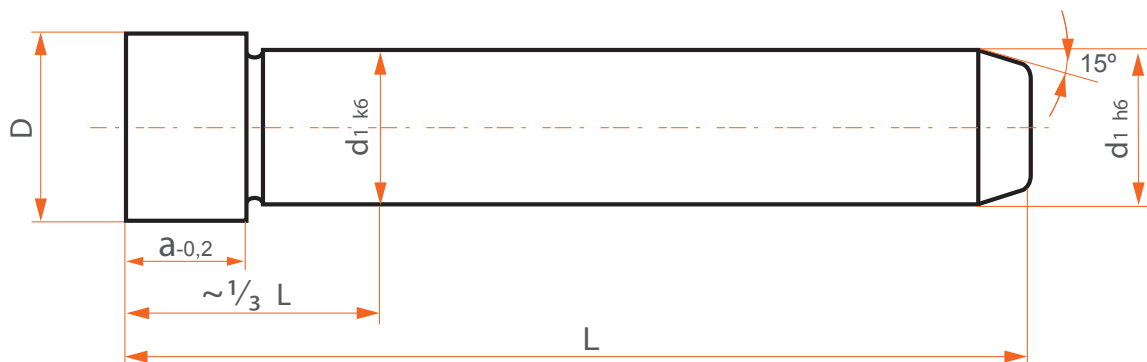
GC2



d ₁	d ₂	D	a	S	m	L							
						26	35	45	50	65	70	100	
12	16	20	4	12	26								
					26								
					30								
16	20	24	4	12	34								
					44								
					54								
					34								
18	25	30	6	14	44								
					44								
22	30	35	6	14	44								
					54								
					64								

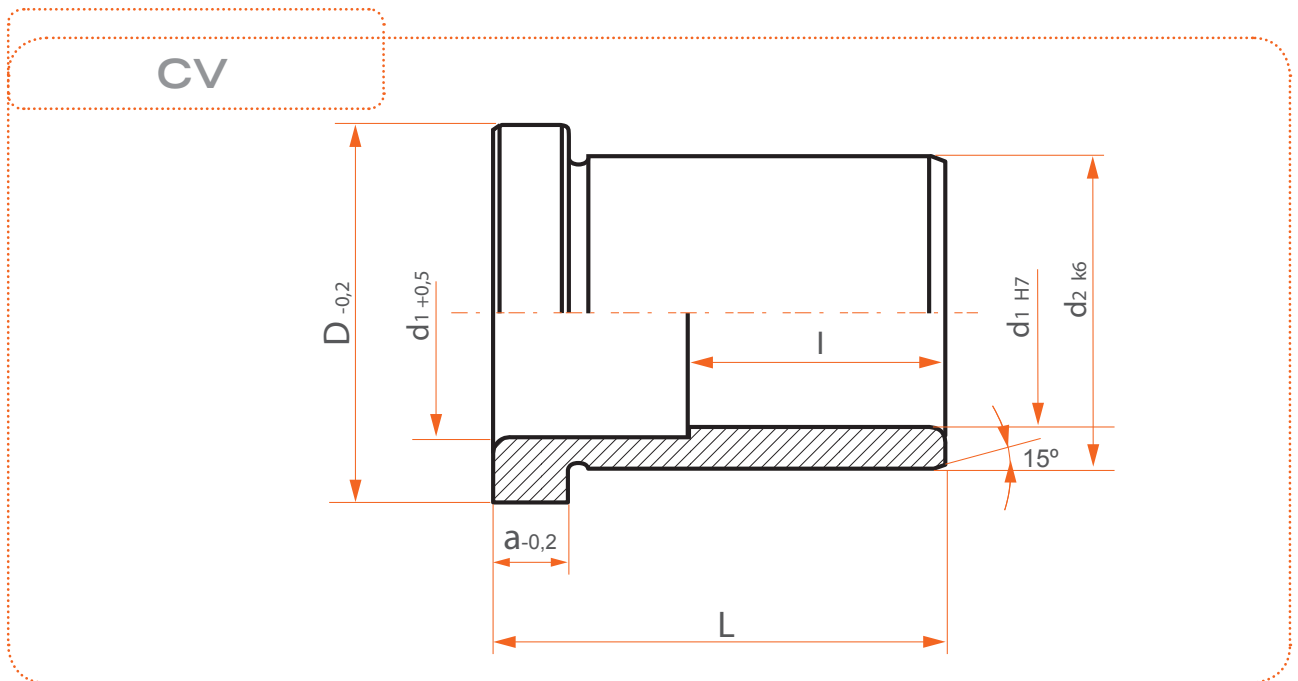
Material	Acero 1.7264
Material	Steel 1.7264
Tratamiento	Cementado (profun. 0,8 mm)
Treatment	Case hardened (depth 0,8 mm)
Dureza	60 - 62 Hrc
Hardness	60 - 62 Hrc
Forma de pedido	Guía G2 / d1 x L
Order form	Guide Pillar G2 / d1 x L

G2



d ₁	D	a	L																			
			44	52	65	75	85	95	105	115	125	140	170	200	225	250	275	300	325	350	375	400
10	12	8																				
12	15	8																				
14	17	10																				
16	19	12																				
18	22	14																				
20	24	15																				
25	30	18																				
30	35	20																				
40	47	22																				
50	58	25																				

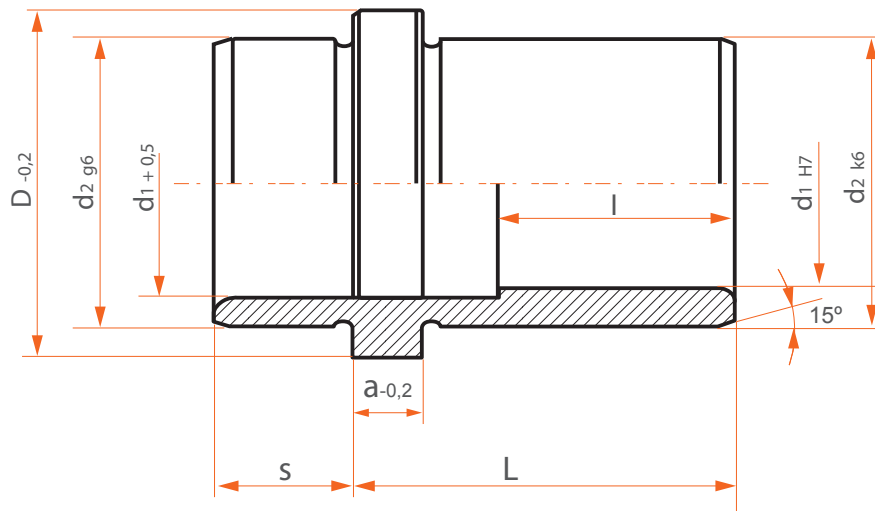
Material	Acero 1.7264
Material	Steel 1.7264
Tratamiento	Cementado (profun. 0,8 mm)
Treatment	Case hardened (depth 0,8 mm)
Dureza	60 - 62 Hrc
Hardness	60 - 62 Hrc
Forma de pedido	Casquillo CV / d1 x L
Order form	Guide Bush CV / d1 x L



d_1	d_2	D	a	L												
				17	21	26	35	45	55	65	75	85	95	115	135	
10	14	17	4													
12	16	20	4					l=30	l=37							
14	20	24	4					l=30								
16	20	24	4						l=37	l=43	l=50	l=57	l=63			
18	25	30	6							l=43	l=50	l=57	l=63			
20	30	35	6							l=43	l=50					
22	30	35	6							l=43	l=50	l=57	l=63			
25	35	40	8									l=57	l=63			
30	40	45	8											l=77	l=90	
40	50	54	10													l=90

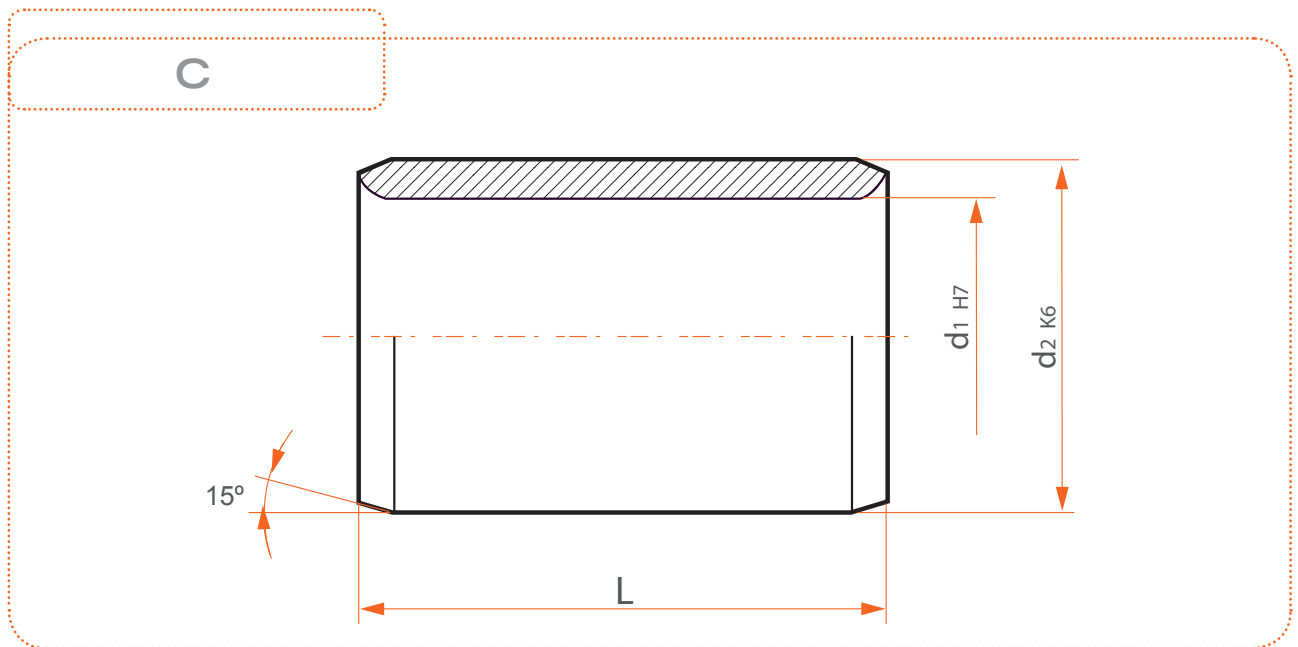
Material	Acero 1.7264
Material	Steel 1.7264
Tratamiento	Cementado (profun. 0,8 mm)
Treatment	Case hardened (depth 0,8 mm)
Dureza	60 - 62 Hrc
Hardness	60 - 62 Hrc
Forma de pedido	Casquillo CV2 / d1 x L
Order form	Guide Bush CV2 / d1 x L

CV2



d ₁	d ₂	D	a	S	L									
					17	21	26	35	45	55	75	95		
12	16	20	4	8				l=29	l=36	l=42				
14	20	24	4	12										
16	20	24	4	12					l=38	l=45	l=58			
18	25	30	6	17						l=48	l=61	l=63		
20	30	35	6	17										
22	30	35	6	17						l=48	l=61	l=63		
25	35	40	8	18										
30	40	45	8	21								l=64	l=77	
40	50	54	10	20										l=76

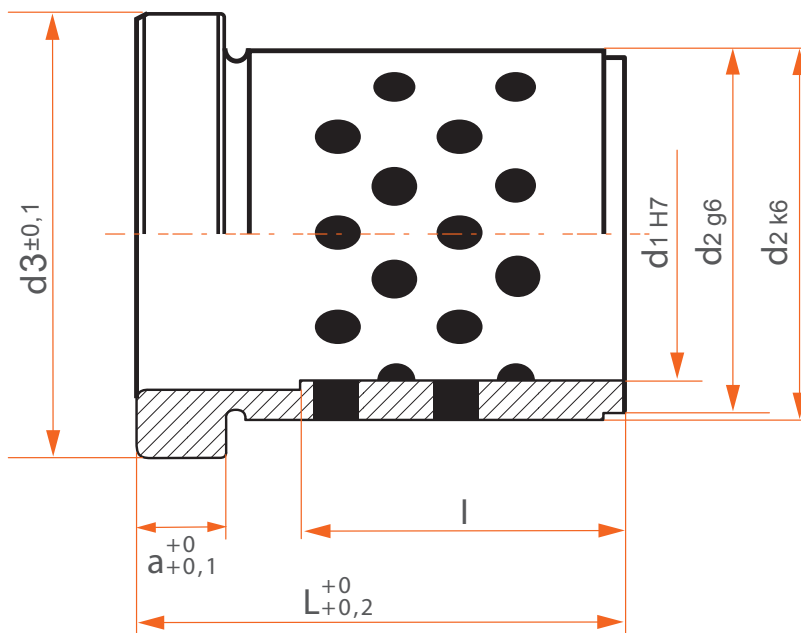
Material	Acero 1.7264
Material	Steel 1.7264
Tratamiento	Cementado (profun. 0,8 mm)
Treatment	Case hardened (depth 0,8 mm)
Dureza	60 - 62 Hrc
Hardness	60 - 62 Hrc
Forma de pedido	Casquillo C / d1 x L
Order form	Guide Bush C / d1 x L



d ₁	d ₂	L								
		9	17	21	26	30	35	45	55	75
10	14									
12	16									
14	20									
16	20									
18	25									
20	30									
22	30									
25	35									
30	40									
40	50									

Material	Bronce + grafito
Material	Bronze + Graphite
Forma de pedido	Casquillo BGCV / d1 x L
Order form	Guide Bush BGCV / d1 x L

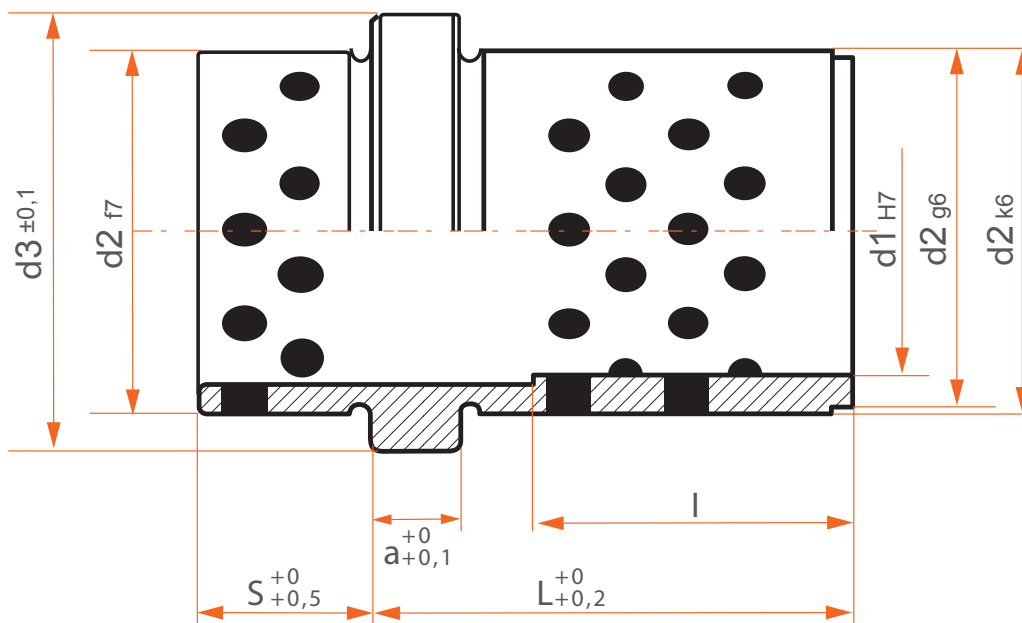
BGCV



d1	d2	d3	a	L												
				17	21	26	35	45	55	65	75	85	95	115	135	
10	14	17	4													
12	16	20	4					l=30	l=37							
14	20	24	4					l=30								
16	20	24	4						l=37	l=43	l=50	l=57	l=63			
18	25	30	6							l=43	l=50	l=57	l=63			
20	30	35	6							l=43	l=50					
22	30	35	6							l=43	l=50	l=57	l=63			
25	35	40	8									l=57	l=63			
30	40	45	8											l=77	l=90	
40	50	54	10													l=90

Material	Bronce + grafito
Material	Bronze + Graphite
Forma de pedido	Casquillo BGCV2 / d1 x L
Order form	Guide Bush BGCV2 / d1 x L

BGCV2



d1	d2	d3	a	S	L								
					17	21	26	35	45	55	75	95	
12	16	20	4	8				I=29	I=36	I=42			
14	20	24	4	12									
16	20	24	4	12					I=38	I=45	I=58		
18	25	30	6	17						I=48	I=61	I=63	
20	30	35	6	17									
22	30	35	6	17						I=48	I=61	I=63	
25	35	40	8	18									
30	40	45	8	21								I=64	I=77
40	50	54	10	20									I=76

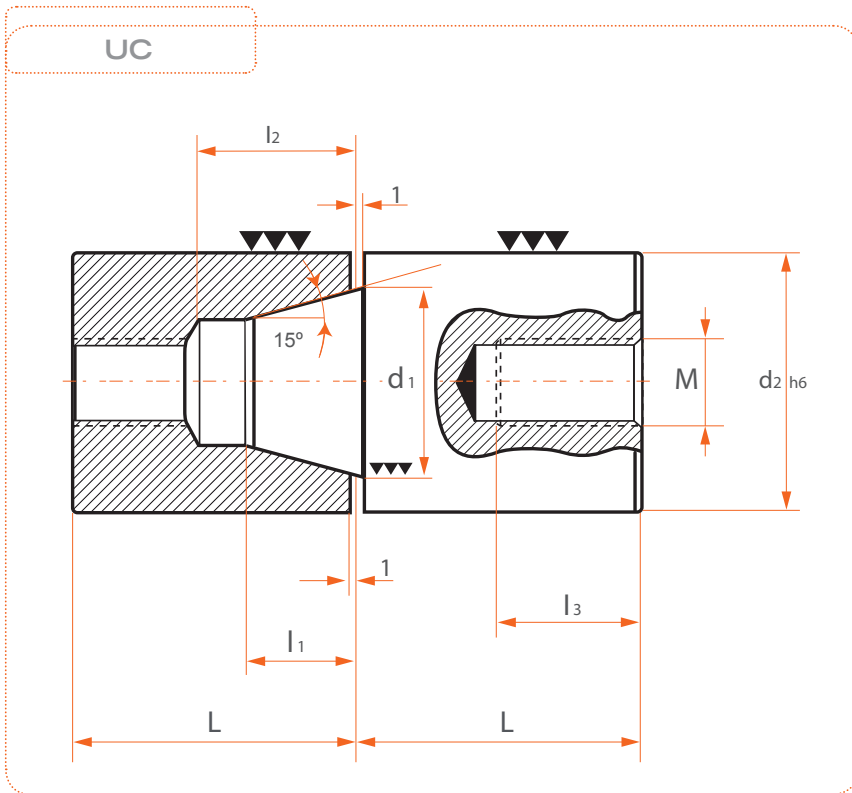
UNIDAD DE CENTRAJE
ROUND CORNER LOCKS

UC

UC

UNIDAD DE CENTRAJE
ROUND CORNER LOCKS

Material	Acero 1.7264
Material	Steel 1.7264
Tratamiento	Cementado (profun. 0,8 mm)
Treatment	Case hardened (depth 0,8 mm)
Dureza	60 - 62 Hrc
Hardness	60 - 62 Hrc
Forma de pedido	Unidad de centraje UC / d2
Order form	Round Corner Locks UC / d2



d_2	L	d_1	l_1	l_2	l_3	M
16	17	10	7	9	12	M-5
20	22	16	10	13	15	M-8
24	27	18	10	15	16	M-8
25	27	20	10	15	16	M-8
26	27	20	10	15	16	M-8
30	36	22	14	20	18	M-10
32	36	25	14	20	18	M-10
40	46	30	18	24	20	M-12
42	46	35	19	26	20	M-12
50	56	40	25	32	25	M-14
60	76	46	30	40	30	M-16

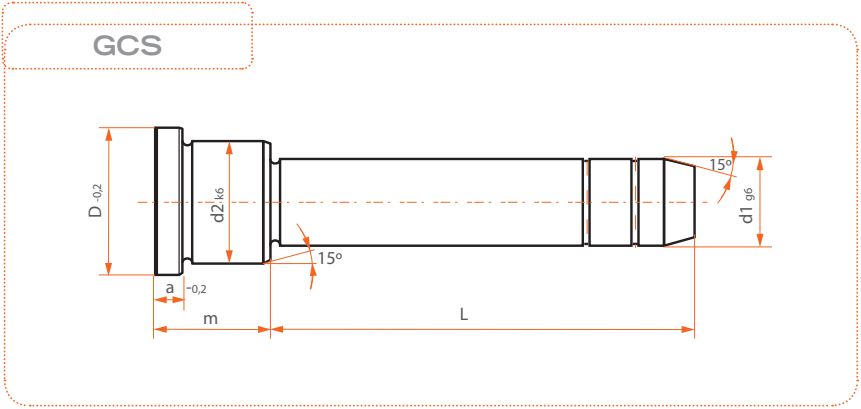
COLUMNA GCS / GUIDE PILLAR GCS

GCS

GCS

COLUMNA GCS / GUIDE PILLAR GCS

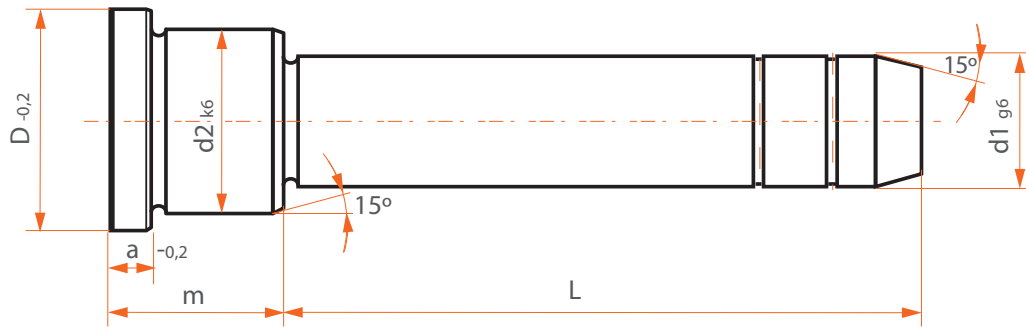
Material	Acero 1.7264
Material	Steel 1.7264
Tratamiento	Cementado (profun. 0,8 mm)
Treatment	Case hardened (depth 0,8 mm)
Dureza	60 - 62 Hrc
Hardness	60 - 62 Hrc
Forma de pedido	Guía GCS / d1 x m x L
Order form	Guide Pillar GCS / d1 x m x L



d_1	d_2	D	a	m	L																					
14 15	20	25	6	17	35	55	75	95																		
				22	20	35	40	45	50	55	65	70	90	110												
				27	20	35	40	45	55	65	85	105														
				36	20	35	40	45	55	65	75	95														
				46	20	35	45	65	85	105																
				56	20	35	55	75	95																	
				66	55	65	95																			
				76	55	95																				
				86	55	95																				
				96	55	95																				
				116	75																					

d_1	d_2	D	a	m	L																						
18 20	26	31	6	17	35	55	75	95																			
				22	20	35	40	45	50	55	60	65	70	80	85	115											
				27	20	35	40	45	50	55	60	65	70	80	85	105	125										
				36	20	35	40	45	50	55	60	65	70	80	85	105	125	165									
				46	20	45	65	85	105	135	165																
				56	20	35	55	75	95																		
				66	55	75	95																				
				76	55	75	95																				
				86	55	75	95																				
				96	55	95																					
				116	115																						
136	135																										
22 24	30	35	6	17	35	55	75																				
				22	35	55	75	105	130																		
				27	25	45	50	60	65	70	80	85	105	125	165												
				36	25	45	50	55	60	70	75	80	95	115	135	165											
				46	25	45	50	60	65	70	80	85	105	125	165												
				56	25	45	55	75	95	115	165																
				66	55	75	95																				
				76	25	45	55	75	95	115																	
				86	55	75	95																				
				96	55	75	95																				
				116	75	115	155																				
136	135																										
156	155																										
30 32	42	47	6	22	35	75	130																				
				27	45	65	105	165																			
				36	55	75	95	115	155																		
				46	45	65	85	105	125	165																	
				56	55	75	95	115	135	175																	
				66	55	75	95	115	135	175																	
				76	55	75																					
				86	55	75	95	115	155																		
				96	55	75	95	115	155																		
				116	75	115	155																				
				136	95	115	155																				
156	115	155																									
176	135	175																									
196	155	195																									

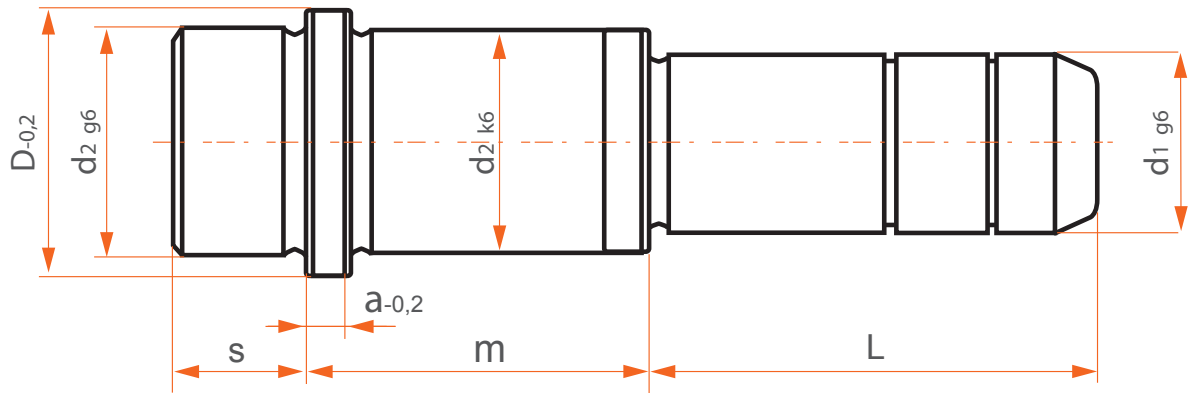
GCS



d_1	d_2	D	a	m	L							
40 42	54	60	10	36	75	135						
				46	95	165						
				56	75	115	155	195				
				66	75	135						
				76	75	115	175					
				86	75	135						
				96	75	115	155					
				116	95	135	195					
				136	95	135	215					
				156	115	155	215					
				176	135	155	175					
				196	155	195	235					
50	66	72	10	96	115							
				116	135							
				136	135							
				156	155							
				196	175							
60	80	86	20	96	115							
				116	135							
				136	135							
				156	155							
				196	175							
246	195											

Material	Acero 1.7264
Material	Steel 1.7264
Tratamiento	Cementado (profun. 0,8 mm)
Treatment	Case hardened (depth 0,8 mm)
Dureza	60 - 62 Hrc
Hardness	60 - 62 Hrc
Forma de pedido	Guía GC2S / d1 x m x L
Order form	Guide Pillar GC2S / d1 x m x L

GC2S



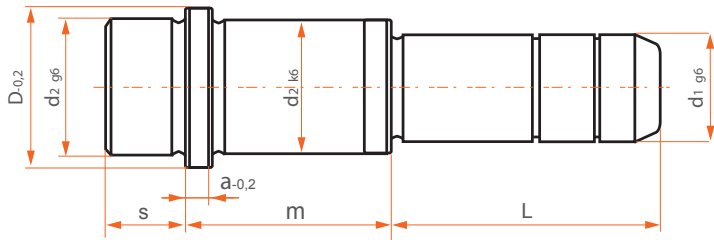
COLUMN GC2S / GUIDE PILLAR GC2S

GC2S

GC2S

COLUMN GC2S / GUIDE PILLAR GC2S

GC2S



d_1	d_2	D	a	S	m	L									
14 15	20	25	6	9	17	35	55	75	95						
					22	30	50	70	90	110	125	150			
					27	30	45	65	85	105	125	145	165		
					36	35	55	75	95	125	155				
					46	35	45	65	85	105	125	145			
					56	35	55	75	95	135					
					66	55	65	95	125						
					76	55	95								
					86	55	95								
					96	55	95								
					116	75									
18 20	26	31	6	9	17	35	55	75	120						
					22	35	45	65	85	115					
					27	35	45	65	85	105	125	165	225	245	
					36	35	55	75	95	115	135	165	225	255	
					46	35	45	65	85	105	135	165	245		
					56	35	55	75	95	155					
					66	35	55	75	95	145					
					76	55	75	95	135						
					86	55	75	95	125						
					96	55	95								
					116	75	115								
136	135														

d_1	d_2	D	a	S	m	L									
22 24	30	35	6	9	17	35	55	75							
					22	35	55	75	105	130					
					27	35	45	65	85	105	125	165	205	245	285
					36	35	55	75	95	115	135	165	205	245	285
					46	35	45	65	85	105	125	165	205		
					56	35	55	75	95	115	165	205			
					66	35	55	75	95	155					
					76	55	75	95	115	145					
					86	55	75	95	135						
					96	55	75	95							
					116	75	115	155							
136	95	135													
156	155														
30 32	42	47	6	9	22	35	75	130							
					27	45	65	105	165	185	245	285			
					36	55	75	95	115	155	245	285			
					46	45	65	85	105	125	165	245	285		
					56	55	75	95	115	135	175	245	295		
					66	55	75	95	115	135	175	245	295		
					76	55	75	95	115	155	225				
					86	55	75	95	115	155	225				
					96	55	75	95	115	155	205				
					116	75	115	155							
					136	95	115	155							
156	115	155													
176	135	175													
196	155	195													
40 42	54	60	10	12	36	75	135								
					46	95	165								
					56	75	115	155	195						
					66	75	135								
					76	75	115	175							
					86	75	135								
					96	75	115	175							
					116	95	135	195							
					136	95	135	215							
					156	115	155	215							
					176	135	155	175							
196	155	195	235												
246	165	245													

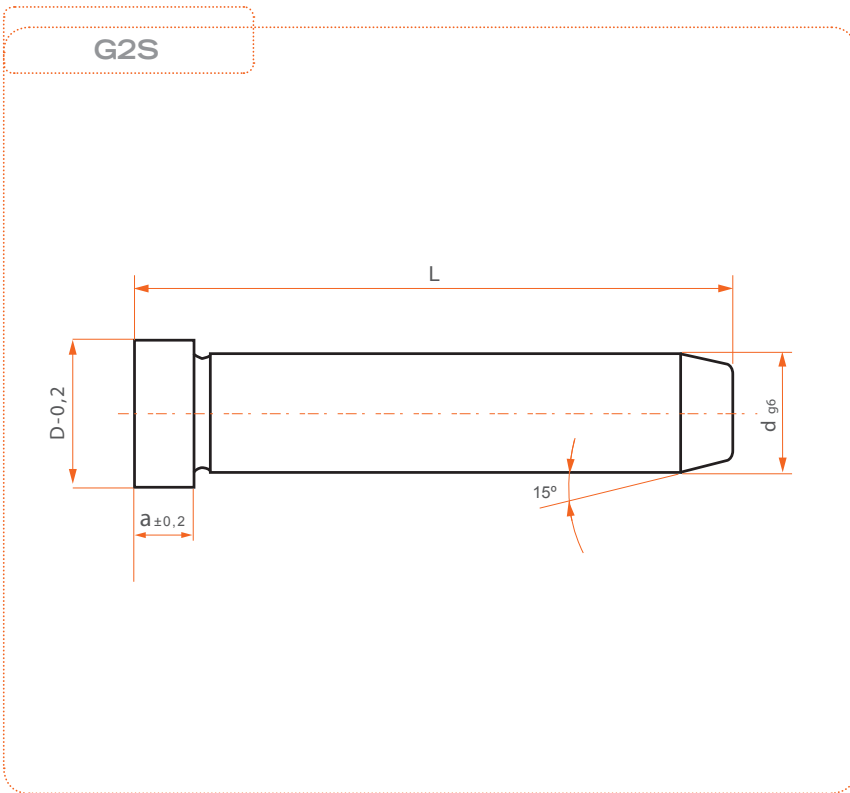
COLUMNA G2S / GUIDE PILLAR G2S

G2S

G2S

COLUMNA G2S / GUIDE PILLAR G2S

Material	Acero 1.7264
Material	Steel 1.7264
Tratamiento	Cementado (profun. 0,8 mm)
Treatment	Case hardened (depth 0,8 mm)
Dureza	60 - 62 Hrc
Hardness	60 - 62 Hrc
Forma de pedido	Guía G2S / d1 x L
Order form	Guide Pillar G2S / d1 x L



D	a	d	L	
10	3	8	40	
			50	
			60	
			80	
			100	
12	3	9	40	
			60	
			80	
			100	
			120	
16	6	12	40	
			60	
			80	
			100	
			120	
18	8	14	60	
			80	
			100	
			120	
			140	
	15	15	15	60
				80
				100
				120
				140

D	a	d	L	
20	3	16	40	
			60	
			80	
			100	
			120	
22	8	18	60	
			80	
			100	
			120	
			140	
24	8	20	140	
			160	
			180	
			200	
			240	
	15	15	22	80
				100
				120
				140
				160

D	a	d	L	
28	3	24	80	
			100	
			120	
			140	
			160	
36	15	30	180	
			200	
			220	
			240	
			300	
48	8	32	100	
			120	
			160	
			200	
			240	
	58	15	50	160
				200
				240
				300
				360

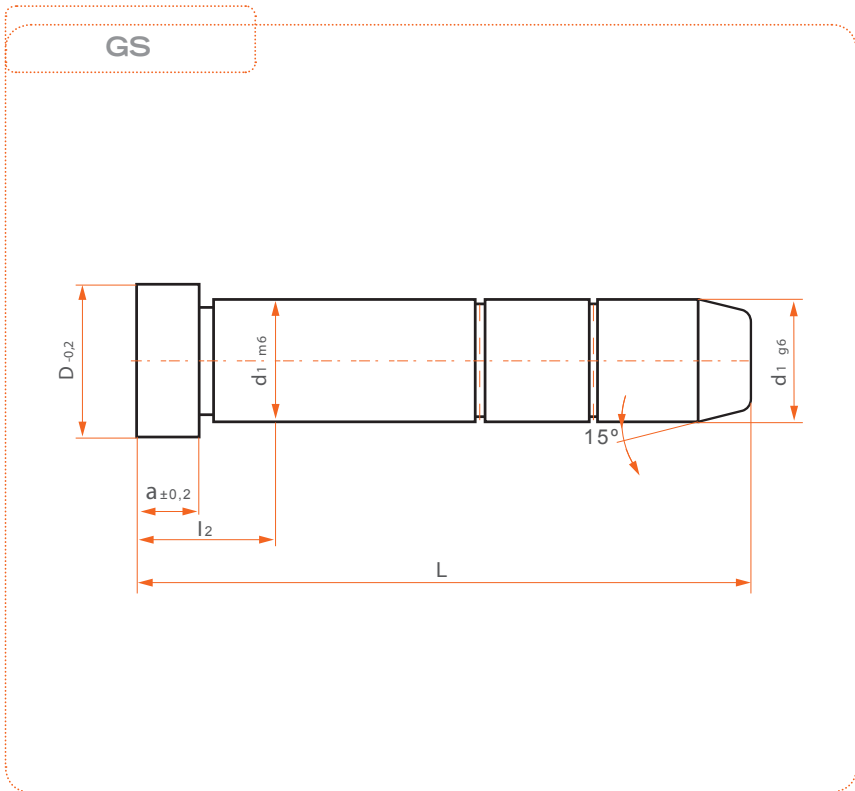
COLUMN GS / GUIDE PILLAR GS

GS

GS

COLUMN GS / GUIDE PILLAR GS

Material	Acero 1.7264
Material	Steel 1.7264
Tratamiento	Cementado (profun. 0,8 mm)
Treatment	Case hardened (depth 0,8 mm)
Dureza	60 - 62 Hrc
Hardness	60 - 62 Hrc
Forma de pedido	Guía GS / d1 x L
Order form	Guide Pillar GS / d1 x L



a	D	l ₂	d ₁	L	
3	12	17	10	40	
		22		60	
		27		100	
6	16	17	12	60	
		22		80	
		27		100	
		26		120	
8	18	17	14	60	
		22		80	
		27		100	
		36		120	
	20	20	46	16	140
			22		60
			27		80
			36		100
			46		120
			46		160
22	22	27	18	80	
		36		100	
		46		120	
		56		140	
	48	24	56	20	160
			76		180
			96		200
			116		200

a	D	l ₂	d ₁	L	
15	26	36	22	100	
		46		120	
		56		140	
		76		160	
		76		180	
		76		200	
15	28	36	24	100	
		46		120	
		56		140	
		56		160	
	36	30	76	30	180
			76		200
			76		220
			76		240
	48	32	56	32	160
			76		200
			76		240
			76		240
58	40	56	40	200	
		76		240	
		96		300	
		96		300	
20	68	56	50	200	
		76		240	
		96		300	
		116		360	

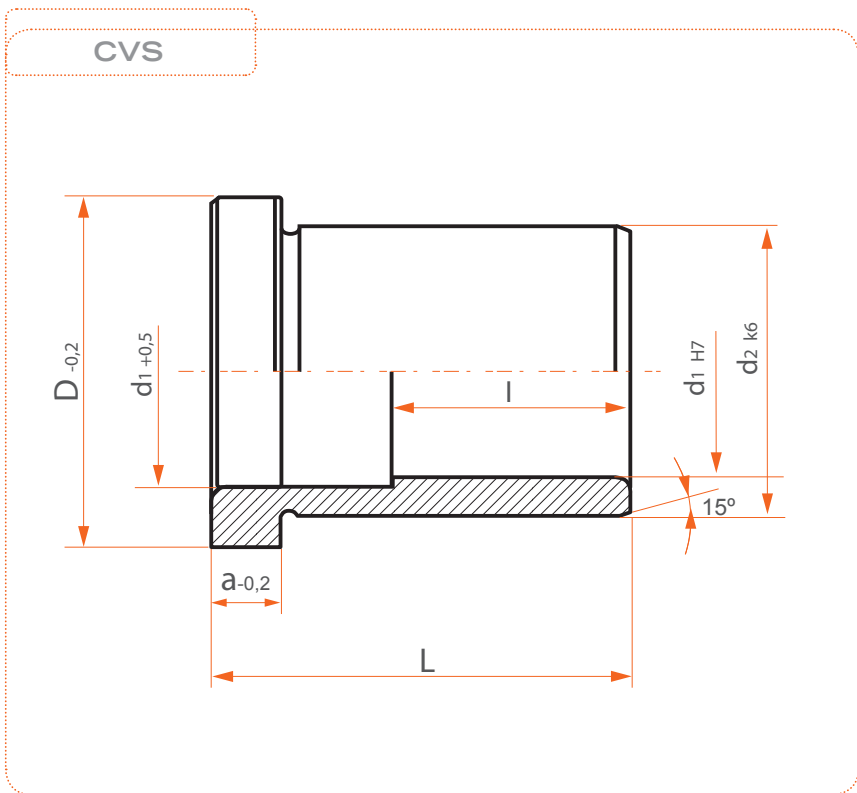
CASQUILLO CVS / GUIDE BUSH CVS

CVS

CVS

CASQUILLO CVS / GUIDE BUSH CVS

Material	Acero 1.7264
Material	Steel 1.7264
Tratamiento	Cementado (profun. 0,8 mm)
Treatment	Case hardened (depth 0,8 mm)
Dureza	60 - 62 Hrc
Hardness	60 - 62 Hrc
Forma de pedido	Casquillo CVS / d1 x L
Order form	Guide Bush CVS / d1 x L



d_1	d_2	D	a	l	L
14 15	20	25	6		12
					17
					22
					27
					36
					46
					56
					66
					76
					86
16	22	27	6		96
					116
					17
					22
					27
					36
					46
					56
					66
					76
18 20	26	31	6		86
					96
					116
					136
					17
					22
					27
					36
					46
					56
22 24	30	35	6		66
					76
					86
					96
					116
					136
					156
					17
					22
					27
36					
22 24	30	35	6	76	46
					56
					66
					76
					86
					96
					116
					136
					156
					176

d_1	d_2	D	a	l	L
30 32	42	47	6		22
					27
					36
					46
					56
					66
					76
					86
					96
					116
30 32	42	47	6		136
					156
					176
					196
					36
					46
					56
					66
					76
					86
40 42	54	60	10		96
					116
					136
					156
					176
					196
					246
					76
					96
					116
50	66	72	10		136
					156
					196
					96
					116
					136
					156
					196
					246
					276
60	80	86	20		136
					156
					196
					246
					136
					156
					196
					246
					276
					326

CASQUILLO CV2S / GUIDE BUSH CV2S

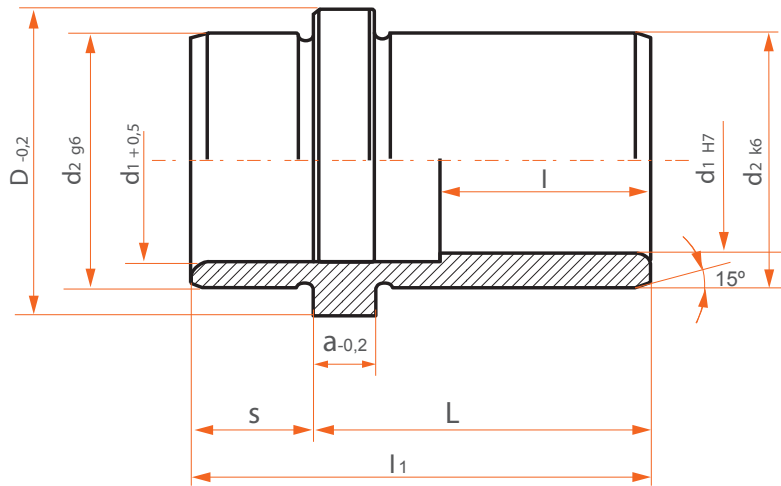
CV2S

CV2S

CASQUILLO CV2S / GUIDE BUSH CV2S

Material	Acero 1.7264
Material	Steel 1.7264
Tratamiento	Cementado (profun. 0,8 mm)
Treatment	Case hardened (depth 0,8 mm)
Dureza	60 - 62 Hrc
Hardness	60 - 62 Hrc
Forma de pedido	Casquillo CV2S / d1 x L
Order form	Guide Bush CV2S / d1 x L

CV2S



d_1	d_2	D	a	S	l	l_1	L								
14	15	20	25	6	9		21	12							
							26	17							
							31	22							
							36	27							
							45	36							
							55	46							
							56	65	56						
								75	66						
								85	76						
								95	86						
105	96														
125	116														
18	20	26	31	6	9		26	12							
							31	17							
							36	22							
							45	27							
							55	36							
							65	46							
							75	56							
							76	85	66						
								95	76						
								105	86						
125	96														
145	116														
22	24	30	35	6	9			26	12						
							31	17							
							36	22							
							45	27							
							55	36							
							65	46							
							75	56							
							76	85	66						
								95	76						
								105	86						
125	96														
145	116														
22	24	30	35	6	9			65	56						
							75	66							
							85	76							
							95	86							
							105	96							
							125	116							
							30	32	42	47	6	9		31	22
														36	27
														45	36
														55	46
65	56														
75	66														
85	76														
95	86														
105	96														
125	116														
40	42	54	60	10	12		48	36							
							58	46							
							68	56							
							78	66							
							88	76							
							98	86							
							108	96							
							128	116							
							136	148	136						
								168	156						
188	176														
208	196														
258	246														

CASQUILLO BGCVS / GUIDE BUSH BGCVS

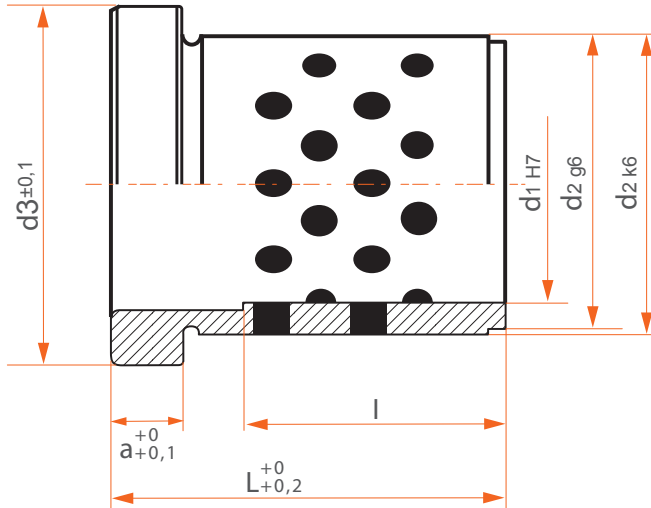
BGCVS

BGCVS

CASQUILLO BGCVS / GUIDE BUSH BGCVS

Material	Bronze + Grafito
Material	Bronze + Graphite
Forma de pedido	Casquillo BGCVS / d1 x L
Order form	Guide Bush BGCVS / d1 x L

BGCVS



d_1	d_2	d_3	a	l	L
14 15	20	25	6		12
					17
					22
					27
					36
					46
					56
					66
					76
					86
56					96
					116
					17
					22
16	22	27	6		27
					36
					46
					56
					66
					76
					86
					96
					116
					136
18 20	26	31	6		17
					22
					27
					36
					46
					56
					66
					76
					86
					96
76					116
					136
					17
					22
22 24	30	35	6		27
					36
					46
					56
					66
					76
					86
					96
					116
					136
96					156

d_1	d_2	d_3	a	l	L
30 32	42	47	6		22
					27
					36
					46
					56
					66
					76
					86
					96
					116
116					136
					156
					176
					196
40 42	54	60	10		36
					46
					56
					66
					76
					86
					96
					116
					136
					156
50	66	72	10		176
					196
					246
					76
					96
					116
					136
					156
					196
					246
136					76
					96
					116
					136
60	80	86	20		156
					196
					246
					96
					116
					136
					156
					196
					246
					136
246					

CASQUILLO BGCV2S
GUIDE BUSH BGCV2S

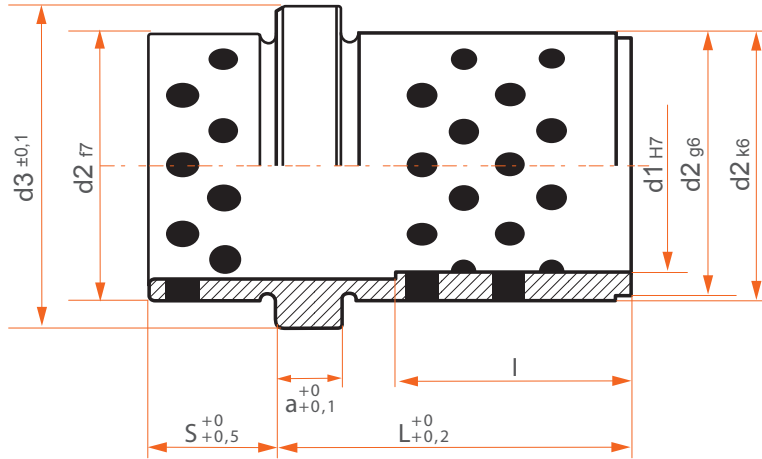
BGCV2S

BGCV2S

CASQUILLO BGCV2S
GUIDE BUSH BGCV2S

Material	Bronze + Grafito
Material	Bronze + Graphite
Forma de pedido	Casquillo BGCV2S / d1 x L
Order form	Guide Bush BGCV2S / d1 x L

BGCV2S



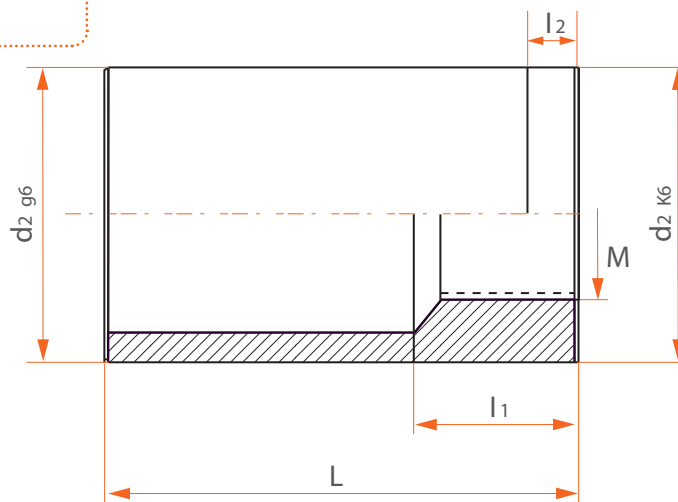
d_1	d_2	d_3	a	l	L
14 15	20	25	6		12
					17
					22
					27
					36
					46
					56
					66
					76
					86
					96
					116
16	22	27	6		17
					22
					27
					36
					46
					56
					66
					76
					86
					96
					116
					18 20
22					
27					
36					
46					
56					
66					
76					
86					
96					
116					
136					
22 24	30	35	6		17
					22
					27
					36
					46
					56
					66
					76
					86
					96
					116
					136
156					
30 32	42	47	6		22
					27
					36
					46
					56
					66
					76
					86
					96
					116
					136
					40 42
22					
27					
36					
46					
56					
66					
76					
86					
96					
116					
136					
50	66	72	10		17
					22
					27
					36
					46
					56
					66
					76
					86
					96
					116
					136
60	80	86	20		17
					22
					27
					36
					46
					56
					66
					76
					86
					96
					116
					136
156					
22					22
					27
					36
					46
					56
					66
					76
					86
					96
					116
					136
					156
					176
					196
					246
					276
					326
					376
					426
					476
					526
					576
					626
					676
					726
					776
					826
					876
					926
					976
					1026
					1076
					1126
					1176
					1226
					1276
					1326
					1376
					1426
					1476
					1526
					1576
					1626
					1676
					1726
					1776
					1826
					1876
					1926
					1976
					2026
					2076
					2126
					2176
					2226
					2276
					2326
					2376
					2426
					2476
					2526
					2576
					2626
					2676
					2726
					2776
					2826
					2876
					2926
					2976
					3026
					3076
					3126
					3176
					3226
					3276
					3326
					3376
					3426
					3476
					3526
					3576
					3626
					3676
					3726
					3776
					3826
					3876
					3926
					3976
					4026
					4076
					4126
					4176
					4226
					4276
					4326
					4376
					4426
					4476
					4526
					4576
					4626
					4676
					4726
					4776
					4826
					4876
					4926
					4976
					5026
					5076
					5126
					5176
					5226
					5276
					5326
					5376
					5426
					5476
					5526
					5576
					5626
					5676
					5726
					5776
					5826
					5876
					5926
					5976
					6026
					6076
					6126
					6176
					6226
					6276
					6326
					6376
					6426
					6476
					6526
					6576
					6626
					6676
					6726
					6776
					6826
					6876
					6926
					6976
					7026
					7076
					7126
					7176
					7226
					7276
					7326
					7376
					7426
					7476
					7526
					7576
					7626
					7676
					7726
					7776
					7826
					7876
					7926
					7976
					8026
					8076
					8126
					8176
					8226
					8276
					8326
					8376
					8426
					8476
					8526
					8576
					8626
					8676
					8726
					8776
					8826
					8876
					8926
					8976
					9026
					9076
					9126
					9176
					9226
					9276
					9326
					9376
					9426
					9476
					9526
					9576
					9626
					9676
					9726
					9776
					9826
					9876
					9926
					9976
					10026
					10076

CASQUILLO DE CENTRAJE CCS CENTRING SLEEVE CCS

CCS

Material	Acero 1.7264
Material	Steel 1.7264
Tratamiento	Cementado (profun. 0,8 mm)
Treatment	Case hardened (depth 0,8 mm)
Dureza	60 - 62 Hrc
Hardness	60 - 62 Hrc
Forma de pedido	Casquillo Centraje CCS / d2 x L
Order form	Centring Sleeve CCS / d2 x L

CCS

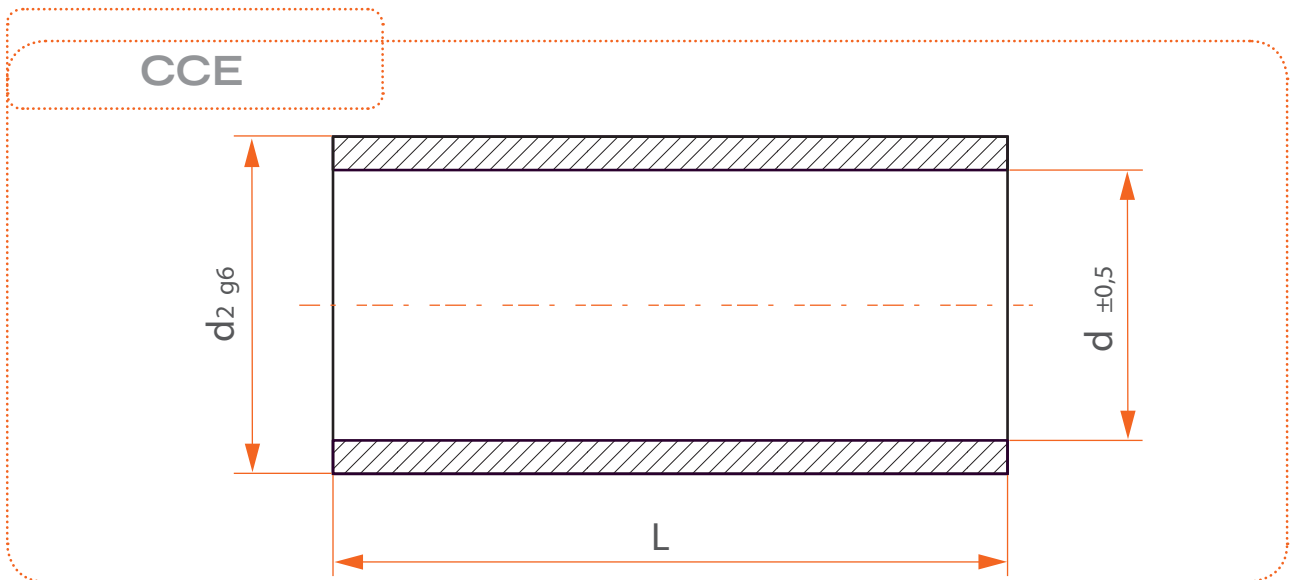


d2	M	I ₂ (k6)	I1	L				
14	M.8	2,5	8	20				
				30				
				40				
				50				
				60				
				70				
				80				
				100				
				20	M.12	2,5	10	30
								40
60								
80								
100								
120								
140								
160								

d2	M	I ₂ (k6)	I1	L
26	M.12	2,5	13	30
				40
				60
				80
				100
				120
				140
				160
				180
				200
30	M.12	2,5	13	40
				60
				80
				100
				120
				140
				160
				180
200				
240				

d2	M	I ₂ (k6)	I1	L
42	M.12	4,5	16	40
				60
				80
				100
				120
				140
				160
				180
				200
				240
54	M.12	4,5	16	60
				80
				120
				160
				200
				240
				280

Material	Acero 1.7264
Material	Steel 1.7264
Tratamiento	Cementado (profun. 0,8 mm)
Treatment	Case hardened (depth 0,8 mm)
Dureza	60 - 62 Hrc
Hardness	60 - 62 Hrc
Forma de pedido	Casquillo Centraje CCE / d2 x L
Order form	Centring Sleeve CCE / d2 x L



d2	d	L												
		20	30	40	50	60	80	90	100	120	140	160	180	
16	13													
20	16													
25	21													
26	21													
30	25													
32	26													